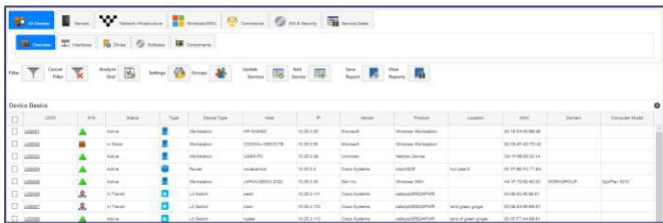


# Codima Toolbox | Inventory and Mapping

## Redefining The Art of Network Inventory and Network Mapping

### What We Discover

The Codima Toolbox Discovery Engine discovers the Network Inventory and asset in your corporate networks without installing any software or agents on them. The database of known managed devices is larger than 20.000 and growing.

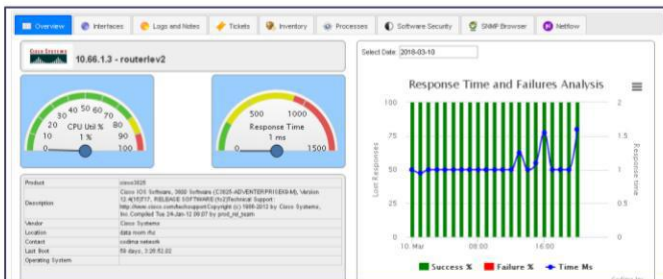
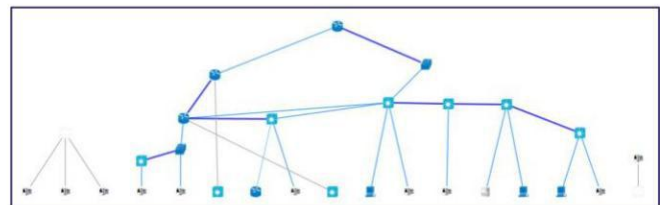
ID	IP	MAC	Type	Model	Vendor	Serial	Product	Location	Status	Discovery Date
1000001	10.0.0.1	00:00:00:00:00:00	Router	H3C S7700	H3C	1000000000000000	H3C S7700	10.0.0.1	Online	2018-03-10 10:00:00
1000002	10.0.0.2	00:00:00:00:00:00	Switch	H3C S5700	H3C	1000000000000000	H3C S5700	10.0.0.2	Online	2018-03-10 10:00:00
1000003	10.0.0.3	00:00:00:00:00:00	Switch	H3C S5700	H3C	1000000000000000	H3C S5700	10.0.0.3	Online	2018-03-10 10:00:00

### How We Inventory

The Codima Toolbox will do the Network Discovery and produce your Network Inventory of hardware and software. The total picture and data of your Network Inventory is the platform for all that you need and want to know about your network.

### What We Map

Codima Toolbox provides instant Networks Maps in Web and Visio for fast overviews and Documentation. The Network Maps can be viewed from remote probes all with live updates.



### How We Monitor

The Network Monitoring system is automated using the Codima Toolbox Network Discovery Engine. The Monitoring engines are highly scalable using full multithreading and staggered polling throughout the polling system. This facilitates monitoring large and small networks alike.

## About Us

Codima delivers in one architecture and one scalable product working from small to the largest network providing all the Network Inventory and Assets information which is mapped on the fly in the Web Map and in Visio for documentation or ITIL purposes and the Network Explorer function provides all the information in one click with all its tailored reports. This improves the user's productivity and keeps the cost down, whether a local network administrator, in a large Datacentre or in a large corporate network.

- Founded 2003
- Over 100 partners

- Many thousands of customers
- All software developed in-house

### We are customer focused

We are experienced IT professionals. The customer is the centre of everything we do.

### We are committed to excellence

We continuously challenge our solutions and ourselves to deliver outstanding quality and performance.

### We exceed expectations

Our performance record speaks for itself. Ask our customers.

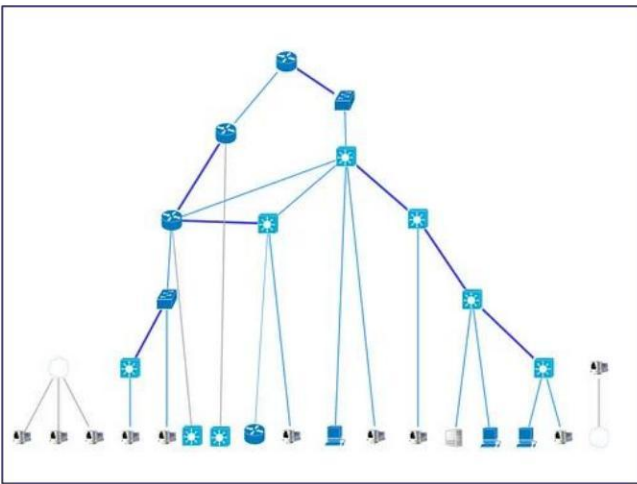
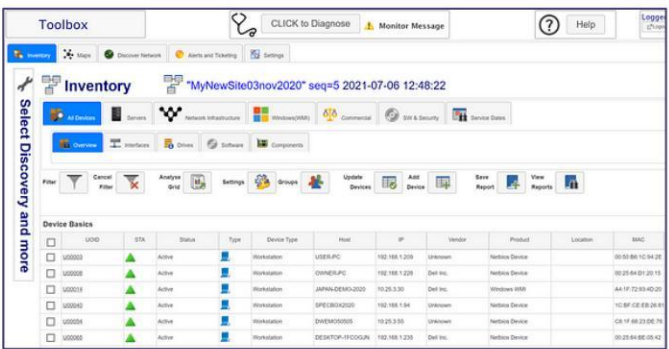
## Feature Overview

### Network Discovery

Fundamental to Network Mapping and Network Monitoring is the Network Discovery. Learn what devices, software, and links are present. Save Time and Resources through automation.

The Codima Toolbox Discovery feature allows you to find computers, printers, routers, switches, etc. that are on your network and organise the information in an easily understood format. By enabling SNMP and/or WMI, your discoveries can become incredibly detailed and informative.

Set up automatic discoveries to avoid the repetitiveness of manually performing network discoveries by using the Discovery Scheduler.

UID	STA	Status	Type	Device Type	Host	IP	Vendor	Product	Location	MAC
U00003		Active	Workstation	USER-PC	192.168.1.209	Unknown	Netgear Device			00:50:86:10:94:28
U00008		Active	Workstation	OWNE-PC	192.168.1.208	Dell Inc.	Netgear Device			00:25:64:01:20:15
U00018		Active	Workstation	JAPAN-DEMO-2020	10.25.3.30	Dell Inc.	Windows 6999			A4:1F:72:93:4D:23
U00040		Active	Workstation	SPEERIX0205	192.168.1.54	Unknown	Netgear Device			10:8F:CE:8B:26:85
U00054		Active	Workstation	DWEM050005	10.25.3.35	Unknown	Netgear Device			C8:1F:46:23:0E:74
U00080		Active	Workstation	DESKTOP-PC0004	192.168.1.208	Dell Inc.	Netgear Device			00:25:64:00:05:42

### Inventory and Assets

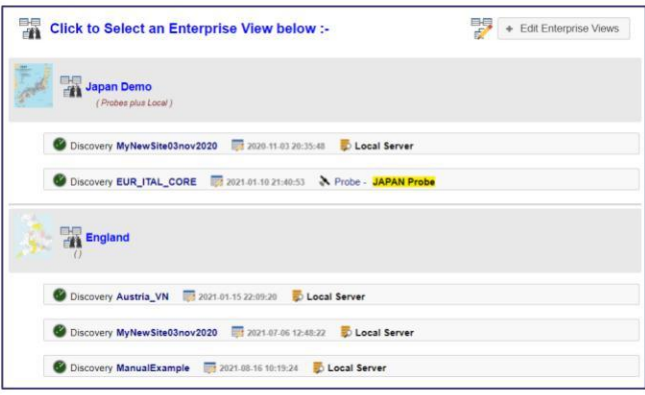
Use Network Discovery and build the Network Inventory and Asset database of devices and software using dynamic searches and user updates.

Codima Toolbox has the ability to manage devices of all types. The Discovery Engine collects information from all network assets that respond to a ping, devices such as PCs, Printer, Servers, Switches, Routers, Firewalls, etc. Toolbox uses information collection methods including SNMP, WMI, WMS, CSP, EDP, Alcatel Interswitch Discovery Protocol, LLDP, SIP Queries, and NetBIOS.

### Enterprise View

The feature Enterprise View delivers true scalability of deployment and performance extending Network Discovery, Inventory, Mapping, Monitoring on a large scale. The Enterprise view can cover locations worldwide. It is based on the concept of an Enterprise View which is edited by the user to create a collection of network views enabled by Network Discoveries.

Any Network Discovery you perform can be on the local installation server or on remote Probes worldwide. Enterprise View combines these discoveries anyway the user chooses and produces analytics-based summation of these discoveries or shows them individually.



Click to Select an Enterprise View below :-

- Japan Demo (Probes plus Local)
  - Discovery MyNewSite03nov2020 2020.11.03 20:35:48 Local Server
  - Discovery EUR\_ITAL\_CORE 2021.01.10 21:40:53 Probe - JAPAN Probe
- England
  - Discovery Austria\_VN 2021.01.15 22:09:20 Local Server
  - Discovery MyNewSite03nov2020 2021.07.06 12:45:22 Local Server
  - Discovery ManualExample 2021.05.16 10:19:24 Local Server





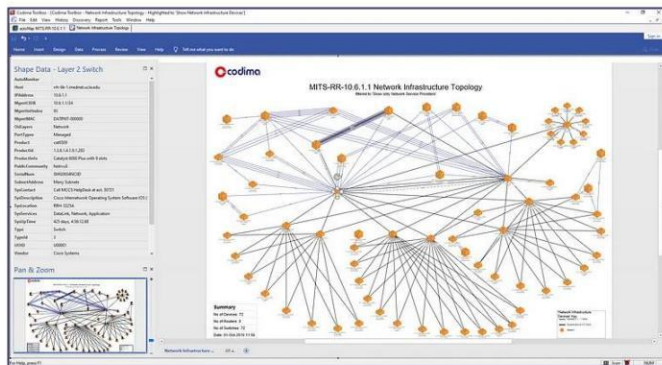
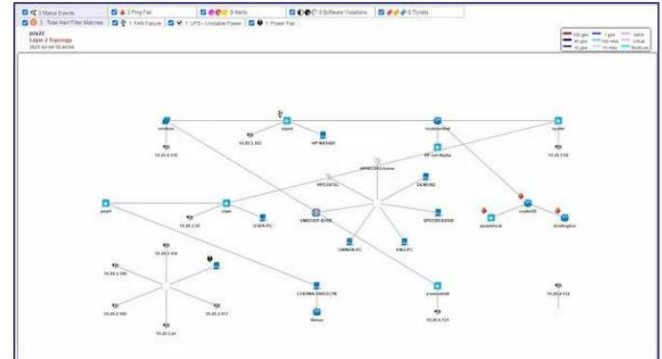
### Maps in Web

Topology Maps are created automatically following the completion of network discovery. The Web Network Map is drawn very quickly in the native browser graphics language SVG. The devices can be dragged around, and the connecting links follow in real time. The draw speed is milliseconds for medium size maps and a second or two for very large maps.

Thirteen different network map topologies are created automatically in conjunction with a Network Discovery for ease of use.

### Inventory ITIL

Codima Toolbox ITIL is a very powerful IT Asset Management tool adding details to a Network Discovery that can be used by Accounts, Engineers, Stock control and Network Support. The problem with many existing solutions is bureaucracy, and often need extensive training, by contrast Codima Toolbox is easy to use.



### Maps in Visio

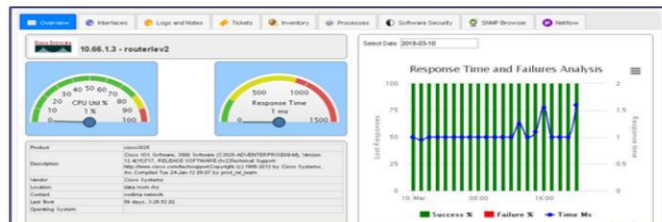
Visio Network Maps use the Microsoft Standard documentation package Visio. It is used by many organisations as a standard presentation and documentation format. Visio is a very flexible drawing package and well suited to documenting simple or complex network topologies.

Thirteen different network map topologies can be created automatically in conjunction with a Network Discovery.

### Probes Architecture

Probes are used to extend the geographic reach of the Network Discovery. They can be viewed locally and also as part of Codima Toolbox Enterprise solution used to aggregate reporting.

The probes operate in parallel giving true performance scalability and consistent access speeds. There is no limit to the number of Probes deployed. Additionally, Live Maps can be viewed remotely.

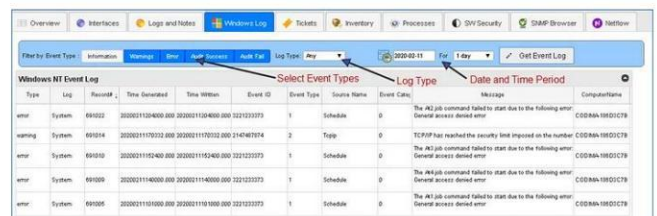


### Monitoring

By clicking on a device in the Codima Toolbox Web Map a GUI appears showing typically Monitored Values such as SNMP and ICMP Ping response time and availability.

### Alert Ticketing

A from the ground up, Integrated system that pulls together Alerts from Codima Toolbox, Windows logs, Network Monitoring and External Alerts such as Syslog, and then Classifies and Presents them throughout the system including in Codima Toolbox Network Maps including Probes.



# Codima Toolbox | Inventory and Mapping

## Technical Data

### Network Discovery

- Support for up to 500,000 devices
- Multi Discovery solution
- Automated Discovery
- Collection methods include SNMP, WMI, WMS, CSP, EDP, Alcatel Interswitch Discovery Protocol, LLDP, SIP Queries, and NetBIOS.

### Inventory and Assets

- Hardware Inventory
- Software Inventory
- Customizable Web Reports
- Advanced filtering options
- Inventory analysis
- Exportable Graphs
- Historic inventory views

### Enterprise View

- World-wide network management
- Cross-network analysis

### Inventory ITIL

- ITIL configuration
- Custom Fields

### Web Maps

- Automatic map creation
- 13 Network topologies
- Historic map views
- Customizable map layout
- Comparisons to previous maps
- Device filtration
- Front panel view of Switches
- Visible VLAN configurations

### Visio Maps

- Full integration with Microsoft Visio
- 13 Network topologies
- Historic Visio Map documentation

### Monitoring

- Live alerts in Web Maps
- CPU utilization monitoring

### Alert Ticketing

- Windows log monitoring
- Custom Alert Filters
- Notifications via email
- Automate Ticketing system
- Setup Toolbox as a Syslog server
- Send Toolbox Alerts as Syslog
- Send Toolbox Alerts as SNMP traps

## System Requirements

- Windows Server 2003, 2008, 2012, 2016, 2019, 2022, Windows 7, 8, 10, 11
- For Visio functionality, one of the following Microsoft Visio versions need to be installed: Microsoft Visio 2013, 2016, 2019
- 4 core processor
- 8Gb 64-bit Memory

## Licencing

Product	Product ID	Currently Licensed
Network Inventory Toolbox	codinv	
Network Inventory with Maps in Wep and Visio Toolbox	codinvmm	
Network Inventory with Maps in Wep and Visio + Alert Ticketing Toolbox	codinvmma	Yes